

Keynote Speaker

Betsy Alison, US SAILING Team Sperry TopSider Paralympic Coach

We are fortunate to have Elizabeth "Betsy" Alison join the conference this year. Betsy is the only female sailor currently represented in the National Sailing Hall of Fame, having been inducted in the 2011 inaugural class. She is a 5-time Rolex Yachtswoman of the Year. Betsy has won World Championship and National titles in the highest calibre sailing disciplines—including Women's Match Racing, Yngling, Lightning classes, Adams Cup, and Rolex International Women's Keelboat Championship. In November of 2005, she was honored by the Pierre de Coubertin International Fair Play Committee with a diploma in the career category for her ongoing contributions to the sport of sailing. Betsy currently serves as a Vice President of IFDS (The International Association for Disabled Sailing) and chairs the IFDS Coaches Commission. She also sits on the US Olympic Sailing Committee, the US Sailing Committee for Disabled Sailing, and US Disabled Sailing Championship Committee.



US Sailing/Walter Cooper

Workshop Presenters



Betsy Altman

Betsy, a lifelong racing sailor, loves being on the water. Focused on one design, she has won in 470s, Lightnings, and Etchells. In 2007 she won the US Women's Open Championship (the Adams Cup), a first by a Chicago Yacht Club skipper. Today, she is an umpire and certified judge, working at Optimist Dinghy events in the US, team races in the US, and match races at the Chicago Match Race Center. She is a 15-year US Sailing volunteer, chairing committees promoting small boat sailing and youth development. She edits/publishes OptiNews, among other projects.



Debbie Bruesewitz

Debbie's casual interest in sailing developed into an insatiable passion. She learned to sail on Chesapeake Bay. Her first regatta—Audi/Yachting Race Week on the bow of a C & C 33! Then she discovered one design like Hobie 16s and J/boats. She sailed events from Key West Race Week to Wednesday nights. The Bermuda Race, deliveries and cruising the BVIs expanded her horizons, but her passion for around-the-buoys called! A long-distance romance brought her to Milwaukee. Today, she skippers/crews on T-10s and a Mount Gay 30.



Amy Cermak

Amy was first certified in 1973 as a water safety instructor and ever since she actively continues to promote water safety. Amy coordinates the annual day-long "AdventureSail" program for girls sponsored by the National Women's Sailing Association as well as a similar event sponsored by the Racine Yacht Club in Racine, Wisconsin. Since 1994, Amy has participated in the Milwaukee Bay Women's Sailing Organization as a skipper.



Holly Davenport

Holly began sailing at the Milwaukee Community Sailing Center in 1985. Since 1999 Holly has worked at the Sailing Center as a Director coordinating educational and special activities. Holly has a 100-ton captain's license and frequently works on many of Milwaukee's excursion and work vessels. Holly also holds many significant US Sailing certifications as an instructor.



Jan Guthrie

Jan has been involved in every aspect of the marine industry. She has been a USCG Captain on charters, private yachts and deliveries; managed marine stores; sailing schools, and worked in boatyards. She has cruised and raced extensively on the Great Lakes and beyond, sailing in numerous Macs and other area races. She has taught classes and seminars for many groups. For the past 15 years, Jan has raced with the only all woman crew out of Northpoint. She owns and operates Jan Guthrie Yacht Brokerage and has sold boats of all types since 1989.



Jane Larson

Jane has sailed most of her life, but became serious in 1997 when she sailed with Bill Gladstone's Chicago Sailing Club. She has raced at Key West Race week, on Lake Michigan including the Queen's Cup, with MBWSO and MAST. She has raced a 470, J/24, Melges 24, Laser 28, Tartan-10, J/92, Beneteau 42s7. In winter, Jane helps Capt. Berg teach navigation and does the same in summer on MCSC's C&C 29. Jane owns a Holder 14, a Cape Dory 25, and a 1959 Cruiser's Inc. wooden lapstrake powerboat named "Buster".



Phyllis McDonald

Phyllis started sailing while in college. In the first two years she made 9300 miles of passages. Trips down the Mississippi to the Gulf of Mexico, up and down the Atlantic coast, Key West to Newport, Rhode Island, and then traversing the Great Lakes. The logged miles and experience as crew and then as skipper earned her a USGC Captain's license. Since the 1970's Phyllis has worked somewhere in the marine industry and has extensive experience in boat maintenance.



Mickey Neilson

Mickey has raced in numerous U.S. Sailing championships, J/24 Worlds, 24 Chicago/Port Huron/Mac Races, 15 Queen's Cups, 6 Key West Race Weeks, and various NODD Regattas. She has raced J/22s, Great Lakes 36, 50, and 70s, J/105s, and J/109s. Mickey volunteers at Nielson Sailmakers in Racine, Wisconsin. Mickey and her husband own and race an Olympic Class Star, which they sail in local and world level competition.



Jane Pegel

Jane Pegel is a successful racing skipper, having won national and international championships throughout her career in Lasers, E-Scows, Sonars, and others. She was awarded Rolex Yachtswoman of the Year three times, and twice the U.S. Women's Single-Hand Champion. One-time iceboating contributor for YACHTING magazine, Jane now sells and services sailboats and, in particular, iceboats.



Mary Richter

Mary Richter grew up sailing Sunfish in Wisconsin and after college spent 12 years in Alaska. She delivered a new fishing boat 1800 miles and fished commercially on the Bering Sea. She has raced schooners in Gloucester, MA and raced on a 12-Meter with Gary Jobson in Portland, Maine. Mary joined South Shore Yacht club in 1997 and raced Tartan 10's until joining the Great Lakes 36 fleet and the crew of "Rogue", a NM 36 in 2005. She started Fine Yacht Finishing in 2002 and is currently working toward a USCG Captains license.



Stephanie Roble

Stephanic grew up in Wisconsin sailing dinghies and scows. She was successful in the Optimist, winning the Orange Bowl and attending the World Championship. Then she sailed the Laser Radial, 420 and 29". As a four-year member of the Old Dominion University varsity sailing team she earned All-American honors twice; was team MVP three years in a row; team captain, and sailed with three All-American crews. Then she discovered match racing and loves the fast-paced, competitive nature of the discipline. She currently works at the Chicago Match Race Center.



Amy Seeley

Amy has been a Meteorologist with the National Weather Service in Chicago for the past 20 years. She graduated from Northern Illinois University in 1992 with a B.S. in Meteorology. From 1994-2009 as Port Meteorological Officer (PMO) she went aboard Great Lakes ships and trained crew on how to take weather observations so that forecasters would have real time information from the lakes. She also calibrated their weather equipment and taught them how to use the National Weather Service products available online.



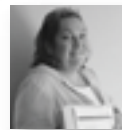
Maggie Shea

She grew up sailing on her grandfather's family-crewed Santa Cruz 70, *Windancer*. In 2011 they won the Mac Race overall—her Grandpa's 64th! She sailed for Connecticut College, was captain for two years, and sat on the NEISA executive committee. They finished 2nd overall at Women's Collegiate Nationals in 2011 and she finished 4th at Singlehanded Nationals in 2008. After graduation, Maggie and Steph competed in the 2012 Olympic Trials Women's Match Racing Semi-Finals. Now she is the event director at The Chicago Match Race Center and continues match racing as much as possible.



Kelly Tebbs

Kelly was born and raised in Milwaukee but moved to Las Vegas at the age of 20 where she spent many weekends exploring Lake Mead on an 18 foot jet boat. In 2003 Kelly moved back to Wisconsin to finish her degree in Accounting and Human Resource Management at the UW-Whitewater campus. Kelly is an active member of the United States Coast Guard Auxiliary. As an Auxiliary member, Kelly's focus is teaching boater safety to children. Kelly enjoys sailing and powerboating on Lake Michigan.



Jennifer "Jenny" Townsend

Jenny has competed in skiing and sailing in weather from 90° and fog to -20 and snow. She has taught all ages to sail boats from Optimist and Prams to 50-footers. Jenny has done buoy and offshore races since childhood. She and her family have cruised Lake Superior. She has raced her J/24 in hundreds of buoy races with family and female-only crew and has competed in many handicap and one-design events. She was also the first 2nd generation/2nd female Commodore of Duluth Yacht Club.



Eliz Greene

Eliz Greene grew up sailing and teaching on small boats in Minnesota, and began her adult sailing life chartering on the Great Lakes and Caribbean. She is appreciated by her husband Clay for her ability to fit into small spaces on their Catalina 34 and to know how to repair what she finds there. They cruise Lake Michigan with their twin daughters and two corgi dogs. They also "race" their boat in the Milwaukee MAST fleet. Eliz travels the country as a women's wellness speaker and writes a top 50 health and wellness blog.

SAILING ABILITY QUALIFICATION GUIDE

Please use the following information as a guide when choosing workshops.

BEGINNER: You haven't been on a sailboat before or you've been a guest on other people's boats. Your experience is limited to following directions. Your knowledge of terminology is basic. Little or no helm time. You've been sailing with others, but do not adjust anything with out specific direction.

INTERMEDIATE: You've been sailing with others. You know fundamental terms and equipment and can prepare for and execute maneuvers with brief commands. You are familiar with basic trim of jib and main, and know when and how to adjust the sails. Helm time is limited, but can read telltales. Know that there are rules of the road, but not what they are. Have been exposed to navigation but have limited practice.

ADVANCED: You can hand, reef and steer and know what that means. Understand navigational terms, and recognize all aids to navigation, but have limited charting practice. You can direct a beginner in sail trim. Can use secondary trim controls. Have flown a spinnaker. Can maneuver in close quarters under sail or power.