

Women Teaching Women

MIDWEST WOMEN'S SAILING CONFERENCE

Saturday, May 11
2013

Milwaukee Community Sailing Center

Chris Gribble Photo

Hill, Burt & Olson, s.c.

West Marine
We make boating more fun!



FORESPAR
MARINE PRODUCTS THAT PERFORM

Team
McLube

HARKEN



Jan Guthrie
Yacht Brokerage
buy-a-boat.com

CROWLEY'S
LAKESIDE

North U.

Chris Gribble
Official Photographer
2012 Midwest Women's
Sailing Conference
cegthing@sbglobal.net



GOOD OLD BOAT

Stitch Mine
CUSTOM EMBROIDERY

SPEED & Smarts

ZILLI



**PROGRESSIVE
IMAGING &
CONSULTING**



More info: womenssailing.org
info@womenssailing.org (414) 530-6528



Christine Martin
2013 MWSC Chairperson

Welcome!

The Planning Committee and I welcome you to the 3rd Annual Midwest Women's Sailing Conference. With a top-notch slate of instructors, and such energetic and inspirational attendees, our first two years provided wonderful learning experiences for all! This year we will take it to even new heights. The Midwest Women's Sailing Conference offers a variety of workshops led by experienced, knowledgeable female instructors. The workshops cover a wide range of topics relating to sailing and the boating community. This is an opportunity to expand your sailing knowledge and gain more exposure to women who share your enthusiasm for being on the water.

I am excited to announce that this year our keynote speaker will be Betsy Alison. We are again fortunate to share in the insights and experiences of such a prominent figure in the global community of women leaders in sailing. You can read more about Betsy on the following pages. Thank you to our dedicated Instructors and Planning Committee for another year of great work. I look forward to seeing you at the Conference!

Morning/Afternoon Sessions: Please select the workshops that interest you most to fill the two morning and two afternoon sessions. Please note that some classes are doubles. For planning purposes, select different workshops under "Second Choice" in case your first choice classes are filled. See the Registration Form insert and the Sailing Ability Qualification Guide on page 3 and the Morning/Afternoon Workshop Descriptions on page 4.

Fee: \$125.00 per person until May 1. Fee includes workshop sessions (morning/afternoon), coffee, soft drinks, and water, continental breakfast, lunch, and after-conference hors d'oeuvres. The reception will have a cash bar.

Reservations after May 1 (if available): \$135.00.

Confirmation: A confirmation email will be sent to you after we receive your signed registration form with full payment. If you do not receive a confirmation, please call to inquire about your reservation (414-530-6528).

Refunds: To and including February 15 – full refund. February 16 to and including March 15 – 50% refund. March 16 to and including April 15 – 25% refund. Sorry, no refunds after April 15.

Register Early: The Conference sells out each year, so register early to avoid disappointment. Registering early increases the chance that you will get your first choice workshops. Space is limited. First come, first served. If sold out, you will be called. A waiting list will be established.

Please fill out the registration form carefully and sign it. Please make your check payable to Midwest Women's Sailing Conference and send it to:

Christine Martin
3701 N. Maryland Ave.,
Milwaukee, WI 53211

Dress Warmly in Layers

Boat/Dockside Class: wear soft (white-soled) shoes and bring a PFD. We will have some PFDs available if you do not own one.

The event will not be cancelled due to rain, snow or sleet. Bring rain gear if weather forecast indicates a need for it.

Official Conference Hotel Hampton Inn and Suites

Winner 2012 Certificate of Excellence Award

<http://www.hamptonmilwaukee.com/>

Location: Downtown Milwaukee, 2.5 miles from Conference
176 W. Wisconsin Avenue, Milwaukee, Wisconsin, 53203

Single/Double Rate: \$109.00/night (inc. continental breakfast)

Rate valid: May 10 and 11, 2013

CALL TO BOOK: 1-888-271-4656

Mention: Midwest Women's Sailing Conference

Parking: \$13.50/24-hours. City parking structure adjacent to hotel. Includes in/out privileges. Hampton Inn access between 2nd and 3rd floor of parking structure.

Make it a Ladies Weekend Away!

Our Host: Milwaukee Community Sailing Center

1450 N. Lincoln Memorial Drive,
Milwaukee, WI 53202



From the South:

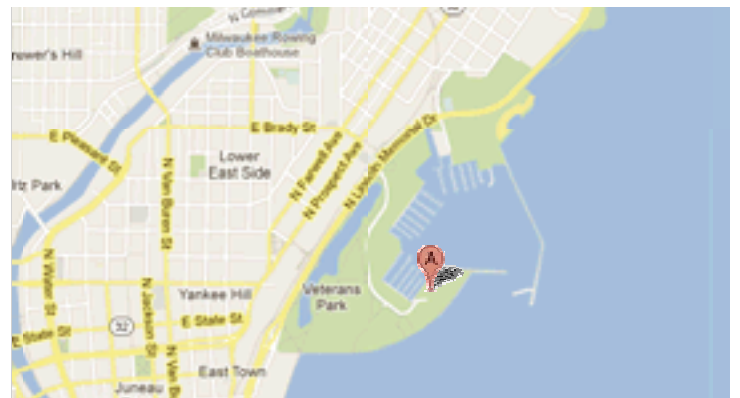
I-94/43 north to I-794 east. Exit at Lakefront exit (#1-F). Follow Lincoln Memorial Dr. north past the War Memorial/Art Museum to Lagoon Dr. (Stoplight at north end of the duck pond/lagoon). Turn right onto Lagoon Drive and follow to the end of the drive. MCSC parking lot is at the end of the drive to the left.

From the West:

I-94 east to I-794 east. Exit at Lakefront exit (#1-F). Follow Lincoln Memorial Dr. north past the War Memorial/Art Museum to Lagoon Dr. (Stoplight at north end of the duck pond/lagoon). Turn right onto Lagoon Drive and follow to the end of the drive. MCSC parking lot is at the end of the drive to the left.

From the North:

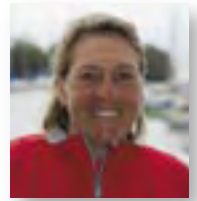
I-94/43 south to I-794 east. Exit at Lakefront exit (#1-F). Follow Lincoln Memorial Dr. north past the War Memorial/Art Museum to Lagoon Dr. (Stoplight at north end of the duck pond/lagoon). Turn right onto Lagoon Drive and follow to the end of the drive. MCSC parking lot is at the end of the drive to the left.



Keynote Speaker

Betsy Alison, US SAILING Team Sperry TopSider Paralympic Coach

We are fortunate to have Elizabeth "Betsy" Alison join the conference this year. Betsy is the only female sailor currently represented in the National Sailing Hall of Fame, having been inducted in the 2011 inaugural class. She is a 5-time Rolex Yachtswoman of the Year. Betsy has won World Championship and National titles in the highest calibre sailing disciplines—including Women's Match Racing, Yngling, Lightning classes, Adams Cup, and Rolex International Women's Keelboat Championship. In November of 2005, she was honored by the Pierre de Coubertin International Fair Play Committee with a diploma in the career category for her ongoing contributions to the sport of sailing. Betsy currently serves as a Vice President of IFDS (The International Association for Disabled Sailing) and chairs the IFDS Coaches Commission. She also sits on the US Olympic Sailing Committee, the US Sailing Committee for Disabled Sailing, and US Disabled Sailing Championship Committee.



US Sailing/Walter Cooper

Workshop Presenters



Betsy Altman

Betsy, a lifelong racing sailor, loves being on the water. Focused on one design, she has won in 470s, Lightnings, and Etchells. In 2007 she won the US Women's Open Championship (the Adams Cup), a first by a Chicago Yacht Club skipper. Today, she is an umpire and certified judge, working at Optimist Dinghy events in the US, team races in the US, and match races at the Chicago Match Race Center. She is a 15-year US Sailing volunteer, chairing committees promoting small boat sailing and youth development. She edits/publishes OptiNews, among other projects.



Debbie Bruesewitz

Debbie's casual interest in sailing developed into an insatiable passion. She learned to sail on Chesapeake Bay. Her first regatta—Audi/Yachting Race Week on the bow of a C & C 33! Then she discovered one design like Hobie 16s and J/boats. She sailed events from Key West Race Week to Wednesday nights. The Bermuda Race, deliveries and cruising the BVIs expanded her horizons, but her passion for around-the-buoys called! A long-distance romance brought her to Milwaukee. Today, she skippers/crews on T-10s and a Mount Gay 30.



Amy Cermak

Amy was first certified in 1973 as a water safety instructor and ever since she actively continues to promote water safety. Amy coordinates the annual day-long "AdventureSail" program for girls sponsored by the National Women's Sailing Association as well as a similar event sponsored by the Racine Yacht Club in Racine, Wisconsin. Since 1994, Amy has participated in the Milwaukee Bay Women's Sailing Organization as a skipper.



Holly Davenport

Holly began sailing at the Milwaukee Community Sailing Center in 1985. Since 1999 Holly has worked at the Sailing Center as a Director coordinating educational and special activities. Holly has a 100-ton captain's license and frequently works on many of Milwaukee's excursion and work vessels. Holly also holds many significant US Sailing certifications as an instructor.



Jan Guthrie

Jan has been involved in every aspect of the marine industry. She has been a USCG Captain on charters, private yachts and deliveries; managed marine stores; sailing schools, and worked in boatyards. She has cruised and raced extensively on the Great Lakes and beyond, sailing in numerous Macs and other area races. She has taught classes and seminars for many groups. For the past 15 years, Jan has raced with the only all woman crew out of Northpoint. She owns and operates Jan Guthrie Yacht Brokerage and has sold boats of all types since 1989.



Jane Larson

Jane has sailed most of her life, but became serious in 1997 when she sailed with Bill Gladstone's Chicago Sailing Club. She has raced at Key West Race week, on Lake Michigan including the Queen's Cup, with MBWSO and MAST. She has raced a 470, J/24, Melges 24, Laser 28, Tartan-10, J/92, Beneteau 42s7. In winter, Jane helps Capt. Berg teach navigation and does the same in summer on MCSC's C&C 29. Jane owns a Holder 14, a Cape Dory 25, and a 1959 Cruiser's Inc. wooden lapstrake powerboat named "Buster".



Phyllis McDonald

Phyllis started sailing while in college. In the first two years she made 9300 miles of passages. Trips down the Mississippi to the Gulf of Mexico, up and down the Atlantic coast, Key West to Newport, Rhode Island, and then traversing the Great Lakes. The logged miles and experience as crew and then as skipper earned her a USGC Captain's license. Since the 1970's Phyllis has worked somewhere in the marine industry and has extensive experience in boat maintenance.



Mickey Neilson

Mickey has raced in numerous U.S. Sailing championships, J/24 Worlds, 24 Chicago/Port Huron/Mac Races, 15 Queen's Cups, 6 Key West Race Weeks, and various NODD Regattas. She has raced J/22s, Great Lakes 36, 50, and 70s, J/105s, and J/109s. Mickey volunteers at Nielson Sailmakers in Racine, Wisconsin. Mickey and her husband own and race an Olympic Class Star, which they sail in local and world level competition.



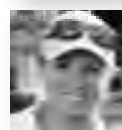
Jane Pegel

Jane Pegel is a successful racing skipper, having won national and international championships throughout her career in Lasers, E-Scows, Sonars, and others. She was awarded Rolex Yachtswoman of the Year three times, and twice the U.S. Women's Single-Hand Champion. One-time iceboating contributor for YACHTING magazine, Jane now sells and services sailboats and, in particular, iceboats.



Mary Richter

Mary Richter grew up sailing Sunfish in Wisconsin and after college spent 12 years in Alaska. She delivered a new fishing boat 1800 miles and fished commercially on the Bering Sea. She has raced schooners in Gloucester, MA and raced on a 12-Meter with Gary Jobson in Portland, Maine. Mary joined South Shore Yacht club in 1997 and raced Tartan 10's until joining the Great Lakes 36 fleet and the crew of "Rogue", a NM 36 in 2005. She started Fine Yacht Finishing in 2002 and is currently working toward a USCG Captains license.



Stephanie Roble

Stephanic grew up in Wisconsin sailing dinghies and scows. She was successful in the Optimist, winning the Orange Bowl and attending the World Championship. Then she sailed the Laser Radial, 420 and 29". As a four-year member of the Old Dominion University varsity sailing team she earned All-American honors twice; was team MVP three years in a row; team captain, and sailed with three All-American crews. Then she discovered match racing and loves the fast-paced, competitive nature of the discipline. She currently works at the Chicago Match Race Center.



Amy Seeley

Amy has been a Meteorologist with the National Weather Service in Chicago for the past 20 years. She graduated from Northern Illinois University in 1992 with a B.S. in Meteorology. From 1994-2009 as Port Meteorological Officer (PMO) she went aboard Great Lakes ships and trained crew on how to take weather observations so that forecasters would have real time information from the lakes. She also calibrated their weather equipment and taught them how to use the National Weather Service products available online.



Maggie Shea

She grew up sailing on her grandfather's family-crewed Santa Cruz 70, *Windancer*. In 2011 they won the Mac Race overall—her Grandpa's 64th! She sailed for Connecticut College, was captain for two years, and sat on the NEISA executive committee. They finished 2nd overall at Women's Collegiate Nationals in 2011 and she finished 4th at Singlehanded Nationals in 2008. After graduation, Maggie and Steph competed in the 2012 Olympic Trials Women's Match Racing Semi-Finals. Now she is the event director at The Chicago Match Race Center and continues match racing as much as possible.



Kelly Tebbs

Kelly was born and raised in Milwaukee but moved to Las Vegas at the age of 20 where she spent many weekends exploring Lake Mead on an 18 foot jet boat. In 2003 Kelly moved back to Wisconsin to finish her degree in Accounting and Human Resource Management at the UW-Whitewater campus. Kelly is an active member of the United States Coast Guard Auxiliary. As an Auxiliary member, Kelly's focus is teaching boater safety to children. Kelly enjoys sailing and powerboating on Lake Michigan.



Jennifer "Jenny" Townsend

Jenny has competed in skiing and sailing in weather from 90° and fog to -20 and snow. She has taught all ages to sail boats from Optimist and Prams to 50-footers. Jenny has done buoy and offshore races since childhood. She and her family have cruised Lake Superior. She has raced her J/24 in hundreds of buoy races with family and female-only crew and has competed in many handicap and one-design events. She was also the first 2nd generation/2nd female Commodore of Duluth Yacht Club.



Eliz Greene

Eliz Greene grew up sailing and teaching on small boats in Minnesota, and began her adult sailing life chartering on the Great Lakes and Caribbean. She is appreciated by her husband Clay for her ability to fit into small spaces on their Catalina 34 and to know how to repair what she finds there. They cruise Lake Michigan with their twin daughters and two corgi dogs. They also "race" their boat in the Milwaukee MAST fleet. Eliz travels the country as a women's wellness speaker and writes a top 50 health and wellness blog.

SAILING ABILITY QUALIFICATION GUIDE

Please use the following information as a guide when choosing workshops.

BEGINNER: You haven't been on a sailboat before or you've been a guest on other people's boats. Your experience is limited to following directions. Your knowledge of terminology is basic. Little or no helm time. You've been sailing with others, but do not adjust anything with out specific direction.

INTERMEDIATE: You've been sailing with others. You know fundamental terms and equipment and can prepare for and execute maneuvers with brief commands. You are familiar with basic trim of jib and main, and know when and how to adjust the sails. Helm time is limited, but can read telltales. Know that there are rules of the road, but not what they are. Have been exposed to navigation but have limited practice.

ADVANCED: You can hand, reef and steer and know what that means. Understand navigational terms, and recognize all aids to navigation, but have limited charting practice. You can direct a beginner in sail trim. Can use secondary trim controls. Have flown a spinnaker. Can maneuver in close quarters under sail or power.

Morning Workshops

Introduction to Sailing

Holly Davenport

For women who are beginners, or who wish to learn the fundamentals of sailing. Receive an introduction to sailing, boat equipment, points of sail, tacking, jibbing, and basic safety notes. Even if you already know some basics of sailing, enhance your knowledge with this opportunity to get questions answered and discuss your first experiences.

Introduction to Match Racing

Stephanie Roble and Maggie Shea

Maggie Shea and Stephanie Roble, both finalists for the 2012 U.S. Olympic Trials in Women's Match Racing, will be hosting an intro to match racing workshop. Match racing is a fast-paced and extremely tactical discipline of sailing, but has many valuable lessons that transfer into fleet and keelboat racing. During the workshop Maggie and Steph will use video to demonstrate basic match racing maneuvers, rules, opportunities and lessons that coincide with other sailing.

Weather on the Water

Amy Seeley

Learn how to find and use the right information to make the best decisions in various weather circumstances - for your boat, and your crew. Read the clouds, sky and wind to judge what is coming and help you prepare. Discuss how to stay informed and exercise good judgment for the safest experience whether cruising or racing.

Sail Repair/Maintenance

Jenny Townsend

Learn how to lengthen the life of your sails through proper care and repair. Topics covered are when to fold, and when to roll; basic care techniques; when to fix a sail yourself and when to send it to the sailmaker.

Spinnaker Handling – Practical

Mickey Neilson

For the sailor who understands the basics of rigging, hoisting and trimming the spinnaker, this course is an opportunity to move to the next level. After a brief review of the basics, focus on trim and handling for the best safety and speed. Discuss the importance of coordination among the pole, guy, sheet, and main sail controls. Address trim for various wind directions, and keys to coordination between driver and trimmer. **Dockside/On-Boat Class**

Docking Theory/Practical

Jan Guthrie

Each approach to a dock requires evaluation of different factors: wind speed, direction, type of dock and available crew and talent. Using land-based theory, and on the dock landing, learn some fundamental techniques of boat handling in docking – including proper use of fenders and cleats, dock line rigging, and techniques for lasso-ing the elusive piling. This class will be outside rain or shine so bring your gear. **Dockside Class**

Safety on the Water

Amy Cermak

In this interactive, hands-on workshop you will gain the knowledge of the safety equipment on your boat,

and learn how to use it. Many aspects of boating safety will be covered: life jackets, marine radios, flares, man over board equipment, and more. A must-do course for people at all levels of sailing.

Starting Tactics

Betsy Alison

Many races are won "at the start". Learn from an expert how to increase the likelihood of starting in the most advantageous position. Discuss how to strategize the approach, navigate relative to other boat positions, judge timing, alter your speed, avoid barging, and abide by starting rules.

Gel Coat Maintenance

Phyllis McDonald

Are you tired of envying other boats' shiny hulls? Do you have some bo-boos that you'd like to fix? Learn how to make your boat's hull look like a million dollars in this informative hands-on session that will teach you what you need to know to patch, wax, and buff your tired-looking fiberglass.

Knot Know-How

Jan Guthrie

Tired of knots in your halyards, the mess of tangled lines in the bottom of your cockpit locker? Can you actually get the end of the line to the person on the dock? Is your anchor line a tangled mess that you hope to never use? Does it take a LONG time to uncoil a line that you need NOW. It is easy, you just need to know the secrets that Jan learned from the manufacturers of the lines themselves and 40+ years of experience.

Afternoon Workshops

Great Lakes Cruising

Eliz Greene

Anyone can cruise! Are you ready for an adventure or does cruising sound like a ordeal? Preparation makes all the difference! Find out what to know, have, and practice before you go. Get insights on equipment, skills, and experience you need, as well as tips on packing, cooking, where to visit, and the questions you need to ask when entering a foreign port. Cruising is about common sense, having the right expectations, and adapting to the circumstances. Get ready for your adventure!

Racing Tactics

Betsy Alison

In this course, explore the strategies racing sailors use to achieve advantage over their competitors. Depending on the course configuration, knowledge of the competitor, winds and point of sail, review those tactics that should be considered in choosing your approach. If you are the tactician, crew or skipper, this course is for you.

Advanced Sail Trim

Betsy Altman

Discuss the challenges of sail trim and best practices for managing sails in various conditions. Racing or cruising, explore how to keep the boat moving, and in control, at critical moments such as light air, heavy air, starting lines or channel crossings. Powering up and depowering are both addressed, as well as the use of boom vang, halyard and other lines. Understand how to read the sails, and set the sails for the best control and performance. **Dockside/On-Boat Class**

Racing Rules

Betsy Altman

Interpreting racing rules as they apply to specific situations on the race course is not always straight forward. In this session, evaluate several tactical

scenarios, and consider the rules that apply. Learn how to make rule-based decisions with consideration to different circumstances, and how to use the rules appropriately in a competitive situation.

Sail Trim

Debbie Bruesewitz

In this short course learn basic sail trim. Debbie will give you instruction on basic trimming of the main & jib for different conditions on the Lake. On docked boat, learn trim and sail handling to get you out sailing with confidence and the knowledge that you can manage the sails. Techniques that you can take with you to practice out on the water this Spring and Summer.

Using GPS

Jan Guthrie

Hands on GPS knowledge with a GPS in your hands, during the class. So you are on the boat, but where .. exactly? Are you in a safe anchorage, or is it shallow over there. How far from shore are you, and how deep is the water? Know how to figure the best course, and where not to go. CMG, VMG, XTE ? Know what they mean and how to use them. How long till you make it to shore? Is there a current? Learn what you need to keep you and the boat safe.

Introduction to Aids to Navigation

Jane Larson

Attend this course for either an introduction, or a good reminder, of the Buoyage System and an understanding of why navigation aids are established and how they are used. Learn what the look of a buoy signifies, as well as its sounds and lights. Receive a cursory overview of navigational charts.

Dabble in Diesels

Phyllis McDonald

Learn about the basic systems of an inboard auxiliary diesel engine. Review the logical steps to diagnose

your engine's problem the next time something goes wrong. Hear about typical symptoms that help diagnose a problem, and tips for preventive maintenance for the best avoidance of problems in the first place!

Introduction to Iceboating

Jane Pegel

What is in an iceboat? How does it differ from a sailboat? What draws women to iceboating? Familiarize yourself with the parts of an iceboat, propulsion on ice, the speed factor, and excitement of participating in the iceboating competitive community.

Wood Finishing Oil/Varnish

Mary Richter

Attend this course to learn various methods for applying, and re-applying wood finishes in the marine environment. Discuss how to protect your wood and keep your boat looking cared for. Review pros and cons of different finishes, how they age, and tips for successful application and greatest durability. Experiment with brush strokes and learn the do's and don'ts for the best performing results.

Suddenly in Command

Kelly Tebbs

If you aspire to helm the boat, this course is for you. Learn the basics of skippering a boat the fundamental actions to take if you are faced with an emergency and must get the boat back to the dock. Address the responsibilities of skipper, the basic principles of operating the sailboat, starting the engine and the basics of electronics.

REGISTRATION FORM

Don't be Disappointed! Participation limited.
Mail Completed Form and Fee ASAP!

Name _____ Date _____
 Address _____ City _____
 State _____ ZIP _____ E-mail _____
 Tel (C) _____ Tel (H) _____ Tel (W) _____
 Yacht Club/Boating Affiliations _____ Boat(s) you sail (make/model/size) _____

Sailing You Like Most (Circle All That Apply): Cruising Racing Daysailing Don't Know

CIRCLE SAILING ABILITY (REQUIRED) refer to the Experience/Qualification Descriptions on page 4 of the brochure:

Sailing Experience: ● Beginner ● Intermediate ● Advanced Years Sailed _____

Office Use Only
Registration No. _____ Date _____

WORKSHOPS – FIRST CHOICE

| 9:30 a.m. – 11:00 a.m. | 11:15 a.m. – 12:45 a.m. | 2:15 p.m. – 3:45 p.m. | 4:00 p.m. – 5:30 p.m. |
|---|--------------------------|---|--------------------------------|
| INTRODUCTION TO SAILING ● | SAFETY ON THE WATER ●●● | SUDDENLY IN COMMAND (DOUBLE SESSION) ●● | |
| INTRODUCTION TO MATCH RACING ●● | STARTING TACTICS ●● | RACING RULES ●● | RACING TACTICS ●● |
| WEATHER ON THE WATER (DOUBLE SESSION) ●●● | | GREAT LAKES CRUISING ●●● | USING GPS ●●● |
| SAIL REPAIR/MAINTENANCE ●●● | GEL COAT MAINTENANCE ●●● | DABBLE IN DIESELS ●● | WOOD FINISHING OIL/VARNISH ●●● |
| **SPINNAKER HANDLING – PRACTICAL (DOUBLE SESSION) ● | | SAIL TRIM ● | *ADVANCED SAIL TRIM ●● |
| *DOCKING THEORY/PRACTICAL ●● | KNOT KNOW-HOW ●●● | INTRODUCTION TO AIDS TO NAVIGATION ● | INTRODUCTION TO ICEBOATING ●●● |

*Dockside **On Boat

WORKSHOPS – SECOND CHOICE

| 9:30 a.m. – 11:00 a.m. | 11:15 a.m. – 12:45 a.m. | 2:15 p.m. – 3:45 p.m. | 4:00 p.m. – 5:30 p.m. |
|---|--------------------------|---|--------------------------------|
| INTRODUCTION TO SAILING ● | SAFETY ON THE WATER ●●● | SUDDENLY IN COMMAND (DOUBLE SESSION) ●● | |
| INTRODUCTION TO MATCH RACING ●● | STARTING TACTICS ●● | RACING RULES ●● | RACING TACTICS ●● |
| WEATHER ON THE WATER (DOUBLE SESSION) ●●● | | GREAT LAKES CRUISING ●●● | USING GPS ●●● |
| SAIL REPAIR/MAINTENANCE ●●● | GEL COAT MAINTENANCE ●●● | DABBLE IN DIESELS ●● | WOOD FINISHING OIL/VARNISH ●●● |
| **SPINNAKER HANDLING – PRACTICAL (DOUBLE SESSION) ● | | SAIL TRIM ● | *ADVANCED SAIL TRIM ●● |
| *DOCKING THEORY/PRACTICAL ●● | KNOT KNOW-HOW ●●● | INTRODUCTION TO AIDS TO NAVIGATION ● | INTRODUCTION TO ICEBOATING ●●● |

*Dockside **On Boat

Logo clothing and merchandise
for sale online at: www.shopmwsc.org

| REGISTRATION FEE | Total |
|--|----------|
| EVENT FEE (if received by May 1, 2013) | \$125.00 |
| LATE EVENT FEE (if received after May 1, 2013) | \$135.00 |
| TOTAL FEES | |
| Please make check payable to: Midwest Women's Sailing Conference | |

REFUND POLICY

To and including Feb 15 — full refund
 February 16 to and including March 15 — 50% refund
 March 16 to and including April 15 — 25% refund
 After April 15th No Refund

Please print and send completed registration form and registration fee to:

Midwest Women's Sailing Conference
 c/o Christine Martin
 3701 N. Maryland Ave.
 Milwaukee, WI 53211

Your participation in the conference will not be confirmed until completed form and full registration fee is received.

Please enter me in the Midwest Women's Sailing Conference
 YOU MUST SIGN BELOW TO VALIDATE REGISTRATION

In consideration of your acceptance of my entry, I hereby agree:

- To comply with all rules and instructions governing this event.
- To release the Midwest Women's Sailing Conference and the Milwaukee Community Sailing Center, its officers, agents or committee personnel from any and all liability for any injury to myself arising out of the Sailing Conference or use of MCSC's facilities, to the extent that such release does not discharge the insurance carrier under the provisions of the insurance policy on the entities participating in this event.
- To assume any risk of injury arising out of my participation in the Women's Sailing Conference, failure or breakage of the yacht sailed on, or any equipment, or weather conditions, and/or acts of god.
- I understand that my name, e-mail address and other contact information will be printed in the Program, and this Program will be made available to our sponsors.
- I understand that during this event, photos/video of me may be taken by authorized persons, which may be used to publicize this event, in various print, broadcast or electronic media.
- That no video/audio or photos by unauthorized persons shall be permitted at this event.

Date _____

Signed _____

Conference Participant